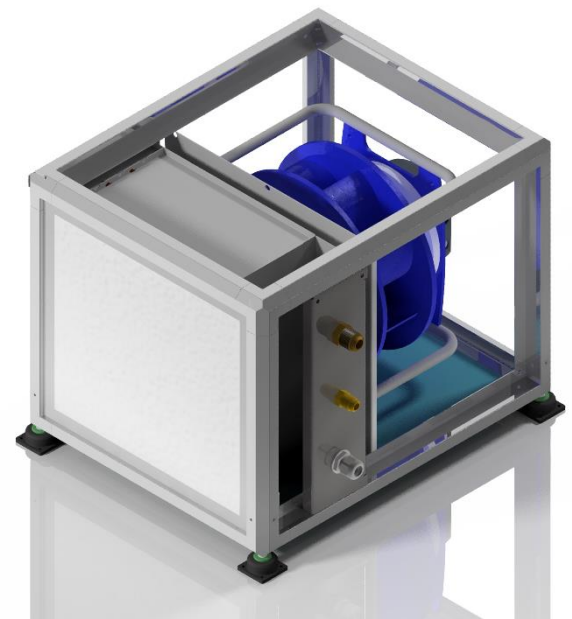


AHU1500T

DATASHEET



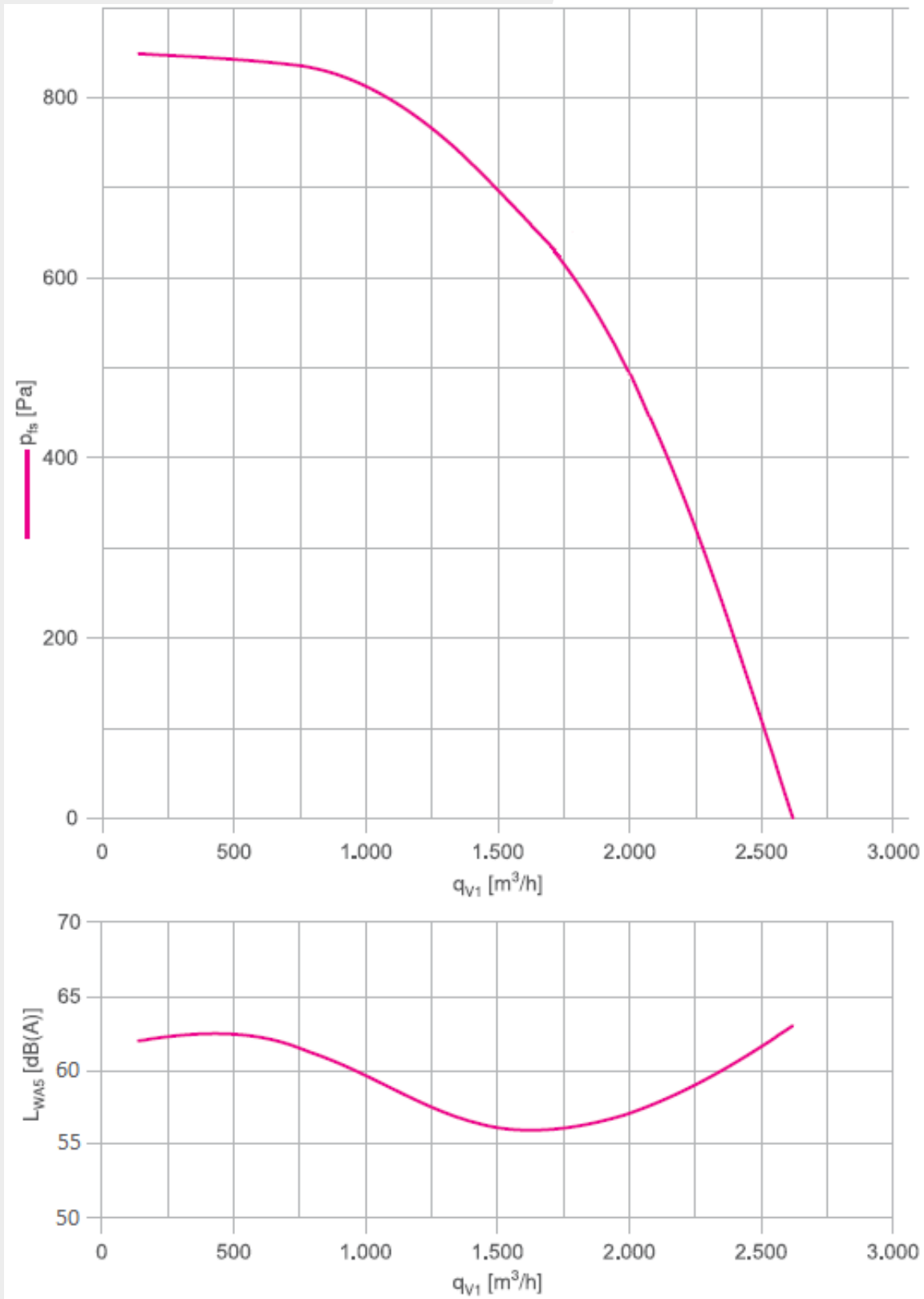
CAPACITY

Air flow m ³ / h	150	1000	1500
Cooling Kw	1,0	5,0	8,0
Heating Kw	1,0	5,0	8,0

Static pressure:	800 Pa
Power supply:	230 Vac 50/60 Hz
Power consumption:	100 W (typical) - 470 W (max)
Control:	Data bus rs485 Modbus RTU
Size W x D x H:	549 x 475 x 425 mm
Weight:	26 Kg
Frame:	Aluminum silver anodized 30 µm + Stainless steel 316
Air working range:	-20°C to +50°C
Vibration:	No significant vibration
Air duct size mm:	Custom made
Refrigerant pipe:	3/4" Gas 1/2" Liquid

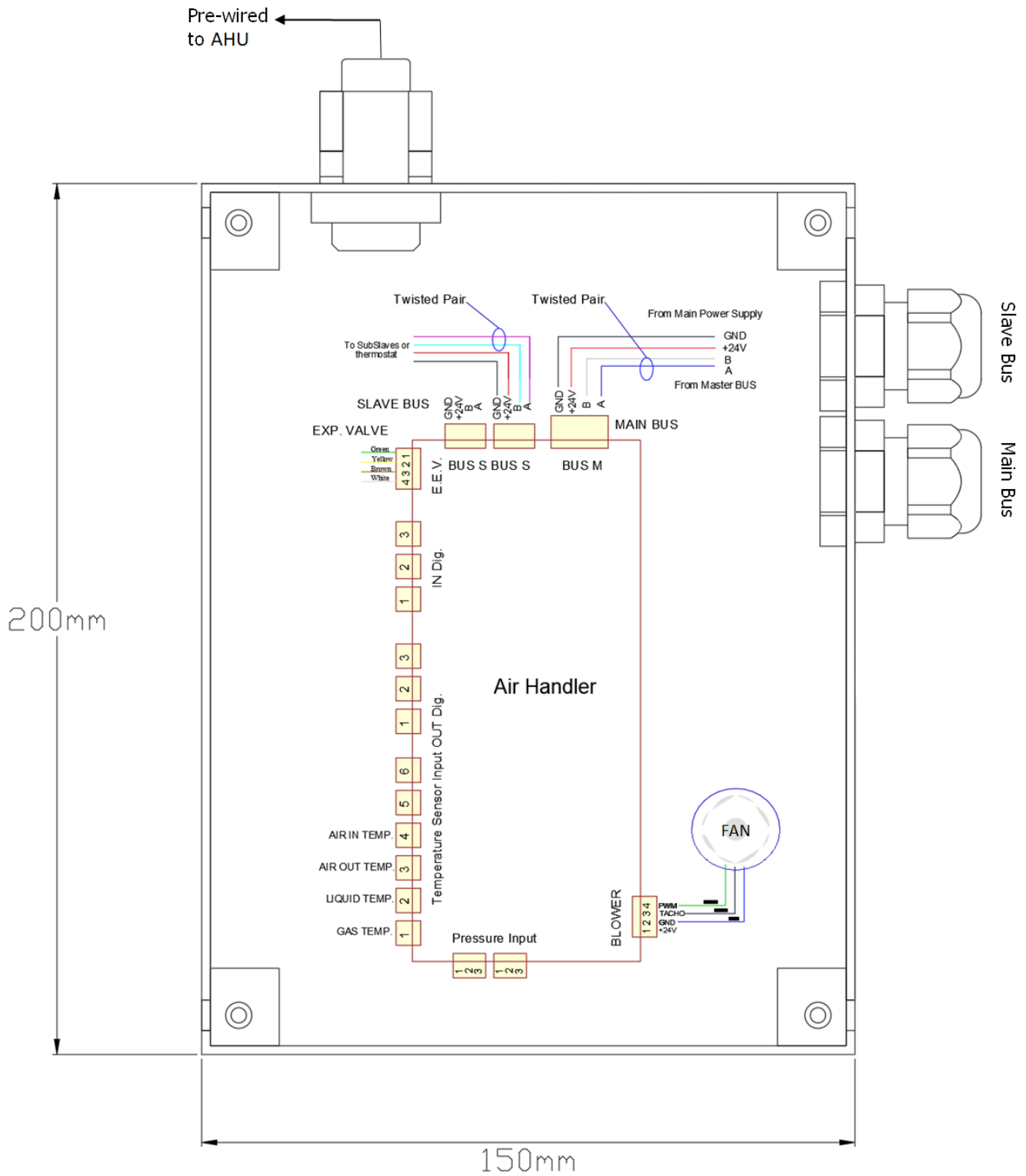
AHU1500T

FAN PERFORMANCE



AHU1500T

ELECTRICAL CONNECTIONS

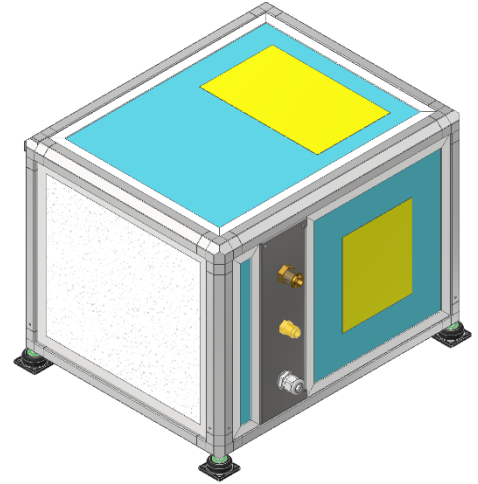


200mm

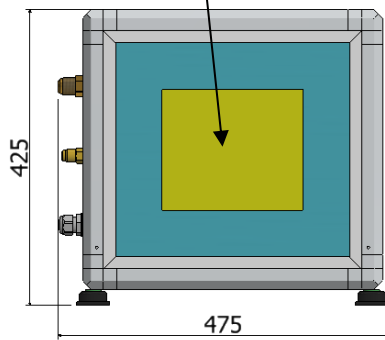
150mm

AHU1500T

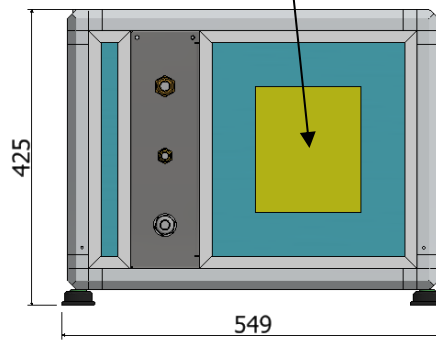
OVERALL DIMENSIONS



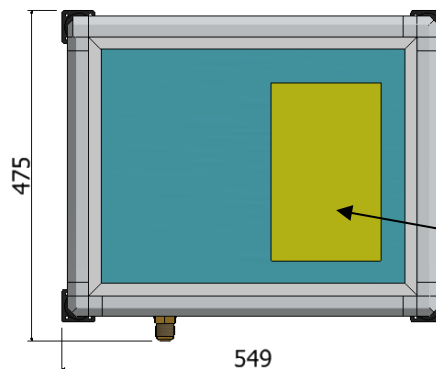
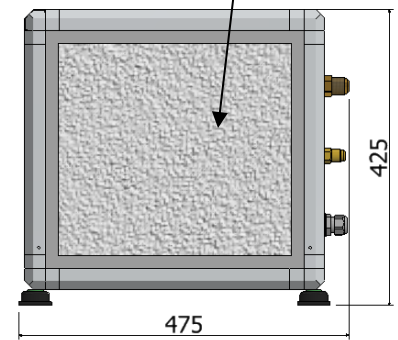
PENETRATION AREA FOR THE AIR DUCTING



PENETRATION AREA FOR THE AIR DUCTING



AIR INLET FILTER



PENETRATION AREA FOR THE AIR DUCTING