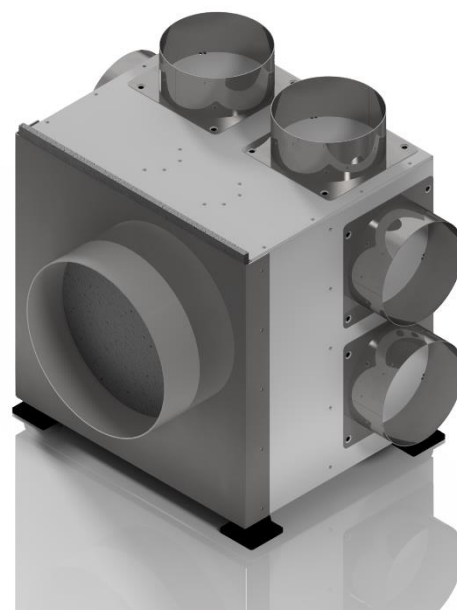


EXH1000

DATASHEET



CAPACITY

Air flow m³ / h

100

500

1000

Static pressure:

600 Pa

Power supply:

230 Vac 50/60 Hz

Power consumption:

170 W (max)

Control:

Data bus rs485 Modbus RTU

Size W x D x H:

430 x 333 x 403 mm

Weight:

5 Kg

Frame:

Stainless steel 316

Vibration:

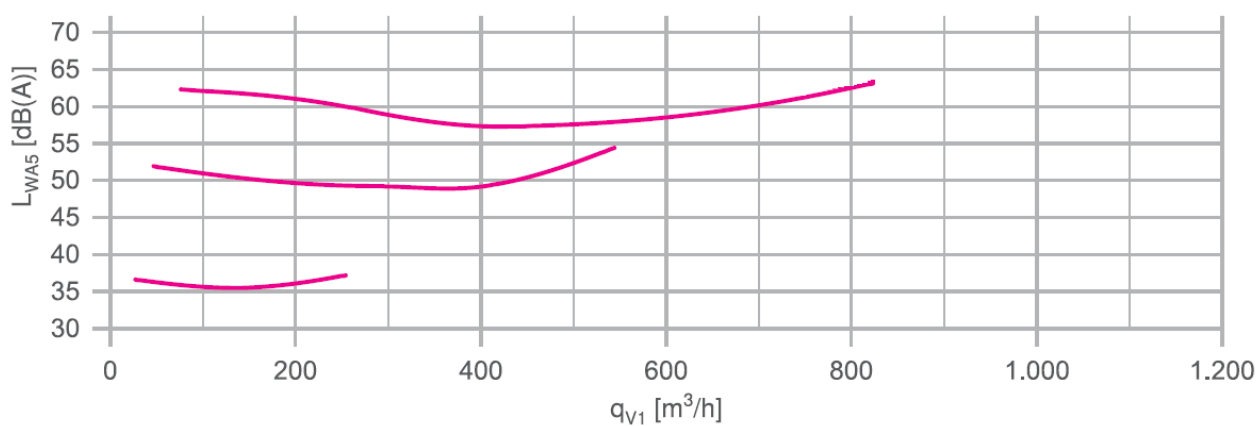
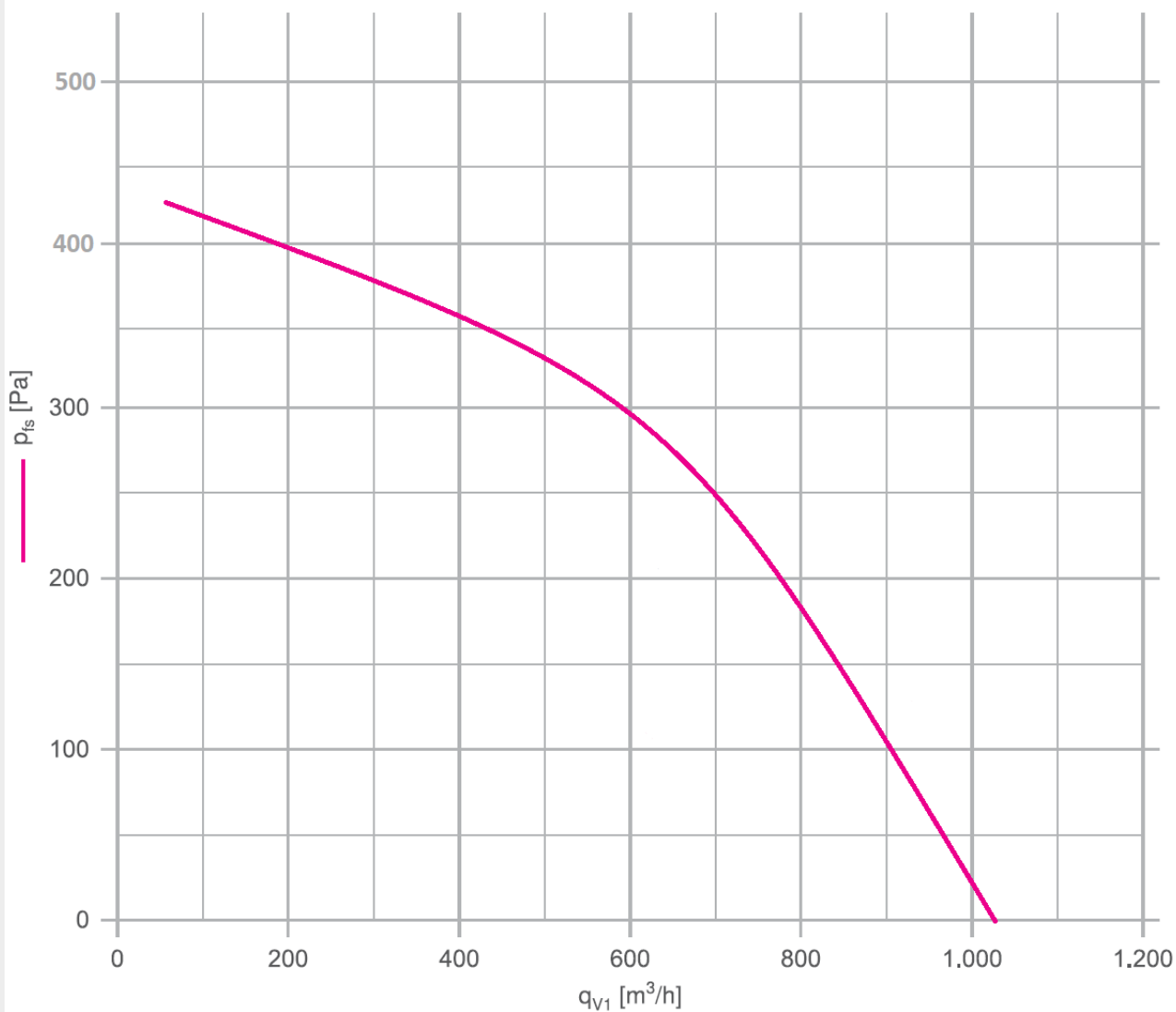
No significant vibration

Air duct size mm:

4 x 125 / custom made

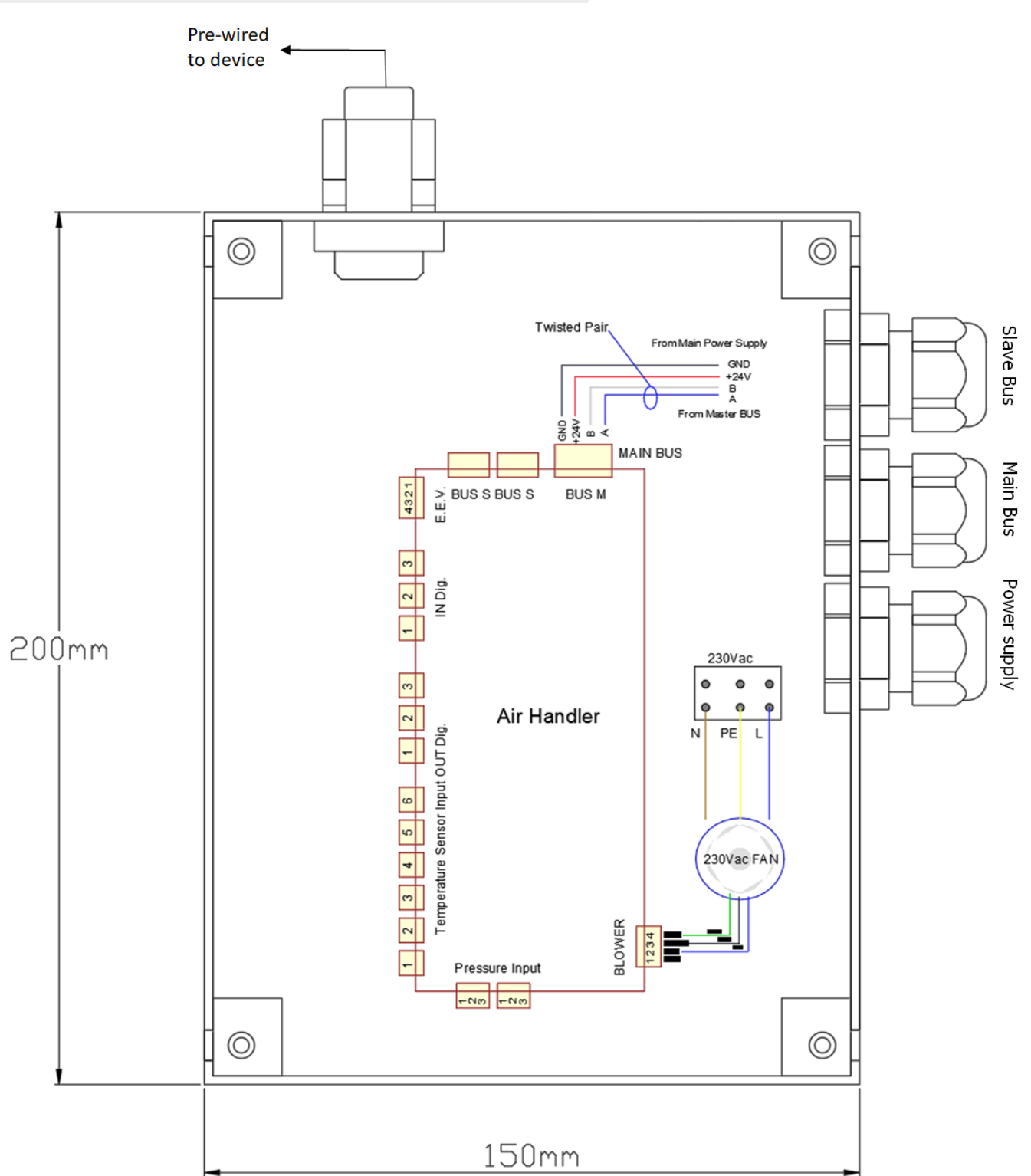
EXH1000

FAN PERFORMANCE



EXH1000

ELECTRICAL CONNECTIONS



EXH1000

OVERALL DIMENSIONS

